

## **after JSB and JT: Non-Directional Journey Out From the Enharmonic**

for Retuned Solo Harp  
April 2004

**Warren Burt**

THE TUNING:

**C, F, G as normal**  
Gives, on the pedals

C# F# G#

C F G

Cb Fb Gb

**D tuned down 1/4 tone** (that is, 50 cents)  
Gives, on the pedals

D+ (D+ = D up a quarter-tone (that is, D plus 50 cents))

D- (D- = D down a quarter-tone (that is, D minus 50 cents))

C+ (C+ = C up a quarter-tone (that is, C plus 50 cents))

**A tuned down 1/4 tone** (that is, 50 cents)  
Gives, on the pedals

A+ (A+ = A up a quarter-tone (that is, A plus 50 cents))

A- (A- = A down a quarter-tone (that is, A minus 50 cents))

G+ (G+ = G up a quarter-tone (that is, G plus 50 cents))

**E tuned down a whole tone** (that is, two semitones)  
Gives, on the pedals

D#

D

C#

**B tuned down a whole tone** (that is, two semitones)  
Gives, on the pedals

A#

A

Ab

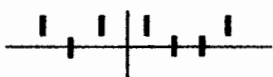
This tuning is used throughout the piece. Different quarter-tone oriented scales result from the settings of the pedals.

The full array of pedals give these pitches:

<u>D</u>	<u>C</u>	<u>B</u>	<u>E</u>	<u>F</u>	<u>G</u>	<u>A</u>
C+	Cb	Ab	Db	Fb	Gb	G+
D-	C	A	D	F	G	A-
D+	C#	A#	D#	F#	G#	A+

Start with this pedaling to give the ancient Greek Dorian Enharmonic

C C+ C# F G G+ G# C



The piece consists of playing the same riff over and over again (57 times, in fact).

Each time the riff is played, the position of ONE pedal is changed.

This means that each time the riff is played, it will sound different, with different quarter-tone harmonies resulting from the pedal changes.

Tempo is between 44 and 52, averaging about 48. Always change tempo gradually.

Tempo Rubato, slow down for resultant harmonies you like. Slight pauses are ok, though, (especially when changing the C pedal), as long as the sense of forward motion is preserved. In general, though, pedal change should not disturb the rhythm.

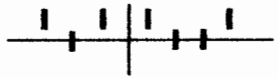
Here is the riff - note that only STRINGS are notated here, NOT the pitches resulting from the retuning.

♩ = 48

### Notation:

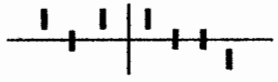
The piece is notated as a series of pedal changes. Each of these occurs after the riff has been played. The note name in parentheses below the pedal diagram gives the name of the pedal to be changed and it's pitch name AS IF normal tuning were used. It ONLY indicates Pedal Position, and NOT resulting pitch. The scale resulting from this pedal setting is given as a list of notes to the right of the pedal diagram.

1.



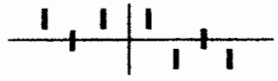
(C C+ C# F G G+ G# C)

2.



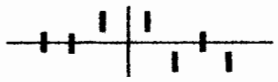
(C C+ C# F G A+ G# C)  
(A#)

3.



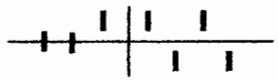
(C C+ C# F# G A+ G# C)  
(F#)

4.



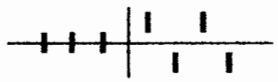
(C D- C# F# G A+ G# C)  
(D)

5.



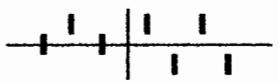
(C D- C# F# Gb A+ G# C)  
(Gb)

6.



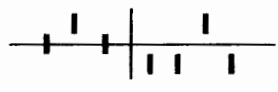
(C D- C# F# Gb A+ A C)  
(B)

7.



(Cb D- C# F# Gb A+ A Cb)  
(Cb)

8.

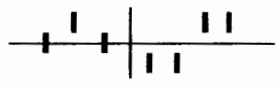


(Cb D- D# F# Gb A+ A Cb)

(E#)

Detailed description: A six-string fretboard diagram with a vertical center line. The left side has two frets: the first has one bar on the 1st string, and the second has two bars on the 1st and 2nd strings. The right side has three frets: the first has one bar on the 6th string, the second has two bars on the 5th and 6th strings, and the third has one bar on the 6th string.

9.




(Cb D- D# F# Gb G+ A Cb)

(Ab)

Detailed description: A six-string fretboard diagram with a vertical center line. The left side has two frets: the first has one bar on the 1st string, and the second has two bars on the 1st and 2nd strings. The right side has two frets: the first has two bars on the 5th and 6th strings, and the second has two bars on the 5th and 6th strings.

10.

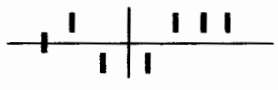


(Cb D- D# F# Gb G+ A# Cb)

(B#)

Detailed description: A six-string fretboard diagram with a vertical center line. The left side has two frets: the first has one bar on the 1st string, and the second has two bars on the 1st and 2nd strings. The right side has two frets: the first has two bars on the 5th and 6th strings, and the second has two bars on the 5th and 6th strings.

11.

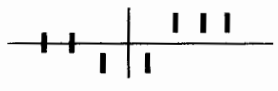


(Cb D- D# Fb Gb G+ A# Cb)

(Fb)

Detailed description: A six-string fretboard diagram with a vertical center line. The left side has two frets: the first has one bar on the 1st string, and the second has two bars on the 1st and 2nd strings. The right side has two frets: the first has two bars on the 5th and 6th strings, and the second has two bars on the 5th and 6th strings.

12.

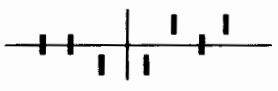


(C D- D# Fb Gb G+ A# C)

(C)

Detailed description: A six-string fretboard diagram with a vertical center line. The left side has two frets: the first has two bars on the 1st and 2nd strings, and the second has two bars on the 1st and 2nd strings. The right side has two frets: the first has two bars on the 5th and 6th strings, and the second has two bars on the 5th and 6th strings.

13.

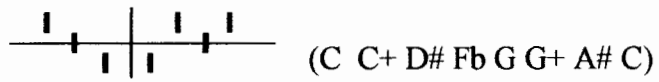


(C D- D# Fb G G+ A# C)

(G)

Detailed description: A six-string fretboard diagram with a vertical center line. The left side has two frets: the first has two bars on the 1st and 2nd strings, and the second has two bars on the 1st and 2nd strings. The right side has two frets: the first has two bars on the 5th and 6th strings, and the second has two bars on the 5th and 6th strings.

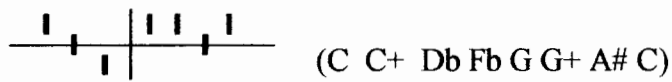
14.



(C C+ D# Fb G G+ A# C)

(Db)

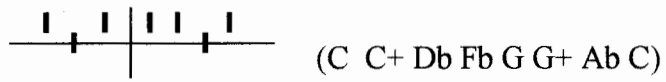
15.



(C C+ Db Fb G G+ A# C)

(Eb)

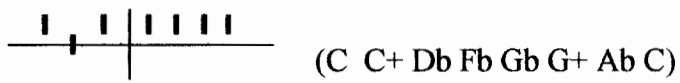
16.



(C C+ Db Fb G G+ Ab C)

(Bb)

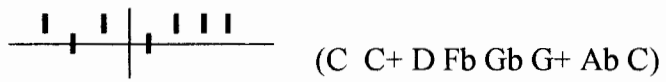
17.



(C C+ Db Fb Gb G+ Ab C)

(Gb)

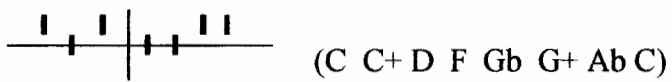
18.



(C C+ D Fb Gb G+ Ab C)

(Eb)

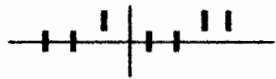
19.



(C C+ D F Gb G+ Ab C)

(F)

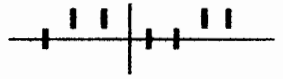
20.



(C D- D F Gb G+ Ab C)

(D)

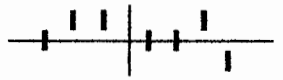
21.



(Cb D- D F Gb G+ Ab Cb)

(Cb)


22.



(Cb D- D F Gb A+ Ab Cb)

(A#)


23.



(Cb D- D F Gb A+ A Cb)

(B)

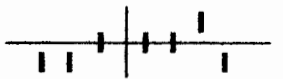
24.



(Cb D+ D F Gb A+ A Cb)

(D#)

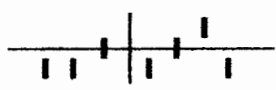
25.



(C# D+ D F Gb A+ A C#)

(C#)

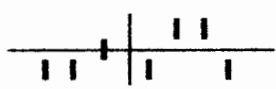
26.



(E#) (C# D+ D# F Gb A+ A C#)

A fretboard diagram showing a guitar neck with a central nut line. Fingering is indicated by vertical bars: fret 1 (1st string), fret 2 (2nd string), fret 3 (3rd string), fret 4 (4th string), fret 5 (5th string), and fret 6 (6th string).

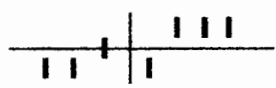
27.



(Fb) (C# D+ D# Fb Gb A+ A C#)

A fretboard diagram showing a guitar neck with a central nut line. Fingering is indicated by vertical bars: fret 1 (1st string), fret 2 (2nd string), fret 3 (3rd string), fret 4 (4th string), fret 5 (5th string), and fret 6 (6th string).

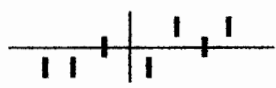
28.



(Ab) (C# D+ D# Fb Gb G+ A C#)

A fretboard diagram showing a guitar neck with a central nut line. Fingering is indicated by vertical bars: fret 1 (1st string), fret 2 (2nd string), fret 3 (3rd string), fret 4 (4th string), fret 5 (5th string), and fret 6 (6th string).

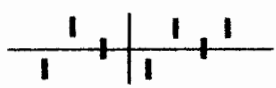
29.



(G) (C# D+ D# Fb G G+ A C#)

A fretboard diagram showing a guitar neck with a central nut line. Fingering is indicated by vertical bars: fret 1 (1st string), fret 2 (2nd string), fret 3 (3rd string), fret 4 (4th string), fret 5 (5th string), and fret 6 (6th string).

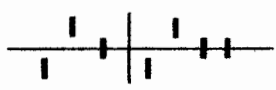
30.



(Cb) (Cb D+ D# Fb G G+ A Cb)

A fretboard diagram showing a guitar neck with a central nut line. Fingering is indicated by vertical bars: fret 1 (1st string), fret 2 (2nd string), fret 3 (3rd string), fret 4 (4th string), fret 5 (5th string), and fret 6 (6th string).


31.



(A) (Cb D+ D# Fb G A- A Cb)

A fretboard diagram showing a guitar neck with a central nut line. Fingering is indicated by vertical bars: fret 1 (1st string), fret 2 (2nd string), fret 3 (3rd string), fret 4 (4th string), fret 5 (5th string), and fret 6 (6th string).

32.




(Cb D+ D# F# G A- A Cb)

(F#)

A fretboard diagram for a six-string instrument. The strings are numbered 1 to 6 from top to bottom. The frets are numbered 1 to 6 from left to right. The notes are: String 1, fret 1 (Cb); String 2, fret 2 (D+); String 3, fret 2 (D#); String 4, fret 3 (F#); String 5, fret 4 (G); String 6, fret 4 (A-). A vertical bar is placed between fret 2 and fret 3.

33.




(Cb D+ Db F# G A- A Cb)

(Eb)

A fretboard diagram for a six-string instrument. The strings are numbered 1 to 6 from top to bottom. The frets are numbered 1 to 6 from left to right. The notes are: String 1, fret 1 (Cb); String 2, fret 2 (D+); String 3, fret 2 (Db); String 4, fret 3 (F#); String 5, fret 4 (G); String 6, fret 4 (A-). A vertical bar is placed between fret 2 and fret 3.

34.

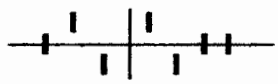


(Cb D- Db F# G A- A Cb)

(D)

A fretboard diagram for a six-string instrument. The strings are numbered 1 to 6 from top to bottom. The frets are numbered 1 to 6 from left to right. The notes are: String 1, fret 1 (Cb); String 2, fret 2 (D-); String 3, fret 2 (Db); String 4, fret 3 (F#); String 5, fret 4 (G); String 6, fret 4 (A-). A vertical bar is placed between fret 2 and fret 3.

35.

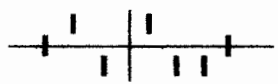


(Cb D- Db F# G A- A# Cb)

(B#)

A fretboard diagram for a six-string instrument. The strings are numbered 1 to 6 from top to bottom. The frets are numbered 1 to 6 from left to right. The notes are: String 1, fret 1 (Cb); String 2, fret 2 (D-); String 3, fret 2 (Db); String 4, fret 3 (F#); String 5, fret 4 (G); String 6, fret 4 (A-). A vertical bar is placed between fret 2 and fret 3.

36.

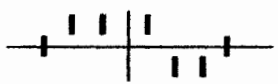


(Cb D- Db F# G# A- A# Cb)

(G#)

A fretboard diagram for a six-string instrument. The strings are numbered 1 to 6 from top to bottom. The frets are numbered 1 to 6 from left to right. The notes are: String 1, fret 1 (Cb); String 2, fret 2 (D-); String 3, fret 2 (Db); String 4, fret 3 (F#); String 5, fret 4 (G#); String 6, fret 4 (A-). A vertical bar is placed between fret 2 and fret 3.

37.



(Cb D- Db F# G# A- Ab Cb)

(Bb)

A fretboard diagram for a six-string instrument. The strings are numbered 1 to 6 from top to bottom. The frets are numbered 1 to 6 from left to right. The notes are: String 1, fret 1 (Cb); String 2, fret 2 (D-); String 3, fret 2 (Db); String 4, fret 3 (F#); String 5, fret 4 (G#); String 6, fret 4 (A-). A vertical bar is placed between fret 2 and fret 3.



38.

(Cb D- Db Fb G# A- Ab Cb)

(Fb)

39.

(Cb D+ Db Fb G# A- Ab Cb)

(D#)

40.

(Cb D+ D# Fb G# A- Ab Cb)

(E#)

41.

(Cb D+ D# Fb G# A+ Ab Cb)

(A#)

42.

(Cb D+ D# Fb G A+ Ab Cb)

(G)

43.

(C D+ D# Fb G A+ Ab C)

(C)

44.

(C D+ D# Fb G A+ A C)

(B)

45.

(C D+ D# F# G A+ A C)

(F#)

46.

(C D+ D# F# G G+ A C)

(Ab)

47.

(C D+ D F# G G+ A C)

(E)

48.

(Cb D+ D F# G G+ A Cb)

(Cb)

49.

(Cb C+ D F# G G+ A Cb)

(Db)

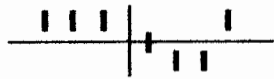
50.



(Cb C+ D F# G# G+ A Cb)

(G#)

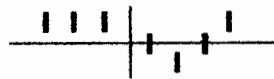
51.



(Cb C+ D F# G# G+ Ab Cb)

(Bb)

52.



(Cb C+ D F# G G+ Ab Cb)

(G)

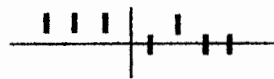
53.



(Cb C+ D Fb G G+ Ab Cb)

(Fb)

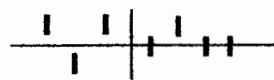
54.



(Cb C+ D Fb G A- Ab Cb)

(A)

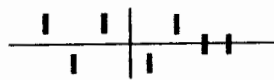
55.



(C# C+ D Fb G A- Ab C#)

(C#)

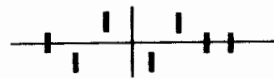
56.



(C# C+ D# Fb G A- Ab C#)

(E#)

57.



(C# D- D# Fb G A- Ab C#)

(D)

(duration: ca. 9:20)

12 April 2004  
Coburg, Vic.  
Warren Burt